

This a partial preview file. When you purchase the download you will receive the entire song.

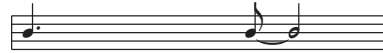
# Rise

a song for an Easter time of year

basic chord rhythm throughout.(except the bridge)

Lead Sheet

Verse 1



Bm A D G

Ev-er feel like noth - ing's\_ gon-na get an - y bet-ter?\_

Bm A D G Bm G

Ev-er feel like noth - ing's right and you can't change a thing? But then one day\_ the

D A Em F#m G Gm

stone is rolled a - way,\_ and Je - sus ri - ses up\_ to show us there's a - noth - er

A D D/G Bm A

way. We can rise up\_ and live\_ like\_ there's hope to\_ be found.\_

D D/G Bm A D D/G

\_ Rise\_ up\_ and give\_ like\_ there's e-nough to go\_ a - round. Rise\_ up\_ and be the

Bm A D/G D/F# G/Bb D Em7

change that we need.\_ We can rise up\_ and be\_ a ho - ly\_ al - le-

G A D Em7 G A second time to Bridge G A

lu - ia. Verse 2 Ho - ly\_ al - le - lu - ia.

D Em7 Bm A D G

Ev - er feel like no\_ one cares a - bout the ones that have no\_ voice? DS

Bm A D G

Ev - er feel like you go a - long\_ cuz you don't have much\_ choice?